

BEST SOLUTIONS FOR INDUSTRIAL CLEANING SYSTEMS

DPF1800



kspmachine.com



KSP[®]

MACHINE TOOL DIVISION



A NEW TOUCH TO A NEW WORLD!



BEST SOLUTION FOR INDUSTRIAL CLEANING SYSTEMS...

15*

PRODUCT CATEGORY

KSP Machine offers the most suitable solutions to its customers in the field of engineering and manufacturing, if the products are subjected to washing, degreasing, phosphating, passivation, coating or any surface application process at any stage during the production process.

KSP Machine, offers complete solutions to its customers through its Machinery and Automation Engineers.

- SPRAY WASHING SYSTEM WITH ROTARY BASKET
- MANUAL WASHING SYSTEM
- HIGH PRESSURE HOT WATER WASHING SYSTEM
- MULTI - PROCESS WASHING SYSTEM
- DIESEL PARTICULATE FILTER WASHING SYSTEM
- ULTRASONIC WASHING SYSTEM
- PLATFORM AGITATION WASHING SYSTEM
- INDUSTRIAL CONTINUOUS WASHING SYSTEM
- SPECIAL DESIGN WASHING SYSTEM
- CYLINDER HEAD PRESSURE TESTER
- SHIM GRINDING MACHINES
- PUNCH TOOL GRINDING MACHINE
- VALVE SPRING ASSEMBLY BENCH
- VACUUM TESTER
- SPECIAL DESIGN MULTI - PROCESS SYSTEMS

KSP is increasing its export figures day by day, with more than 20 years of experience, high engineering knowledge, service quality and innovative management approach. KSP has become a company with more than 25 international dealers and exporting to more than 65 countries, as a result of QUALITY AND TRUST based service concept. KSP has become a followed company among international competitors by using the latest technology and making R&D.

21*

YEARS
PRODUCTION

65*

EXPORTING
COUNTRIES

KSP Machine Tool CO., serving to national and international market since 1998 with Industrial Parts Washing Systems, Engine Reconditioning Machines and Surface Treatment Systems. Throughout the years we have served, it has become a leading company in the national / international market with product quality and quality service approach.

USA	Russia
Canada	Ukraine
Australia	Lithuania
Germany	Finland
England	Romania
Ireland	Netherlands
Belgium	New Zealand
Spain	Austria
Portugal	Latvia
Italy	Chile
France	South Africa
Poland	Sweden
Norway	Serbija
Denmark	Israel

TOP LOADING SERIES HIGH PRESSURE SPRAY WASHING SYSTEM WITH ROTARY BASKET



WM SERIES



TECHNICAL
SERVICE



COMPACT
DESIGN



MINIMUM
CONSUMPTION

The parts which will be washed are placed on a basket that is placed on a stainless rotary platform with sliding system are washed in a closed cabinet structure, dirtiness rate; they clean the waste, oil, and chip on dirty surfaces in various angles.

Machine has been designed for minimum consuming the water, detergent, electric, and time (work force) with cyclic and filtering water system.

SPECIFICATION

- ▣ Stainless Steel Body
- ▣ Completely manufactured with stainless steel sheets and components.
- ▣ Cleaning process timing
- ▣ Developed for minimum water, detergent and electric consumption.
- ▣ Minimum water consumption by closed circuit water cycling system.
- ▣ Heated water (solution) dispensed through jet nozzles to the part.
- ▣ High user safety on gas pistons
- ▣ Gear driven rotary table

USING AREAS

- ▣ To wash motor blocks and parts
- ▣ To wash any parts at bus, truck, automobile and work machines service stations
- ▣ At the workshops which manufacture machining parts and oiled part.
- ▣ At the firms which engine reconditioning and cylinder head repairing.

MODEL	WM650	WM650-L
Basket Diameter (mm.)	550	550
Loading Height (mm.)	250	350
Loading Capacity (kg.)	150	150
Tank Capacity (lt.)	60	60
Pump Pressure (bar)	2,5	2,5
Pump Quantity and Power	1 Piece x 3,0 Hp	1 Piece x 3,0 Hp
Heater (kW)	5	5
Electricity (V/Phase/Hz)	220-380-415/3-1/50-60	220-380-415/3-1/50-60
Process Timer (min.)	0-90	0-90
Working Temperature	0-90°C	0-90°C
Loading Vehicle	not available	not available
Rotary Basket	standard	standard
Oil Skimmer	not available	not available
AISI 430 Stainless Steel Body	standard	standard
AISI 304 Stainless Steel Body	optional	optional
AISI 316 Stainless Steel Body	optional	optional
Packing Size and Weight (mm. - kg.)	1300 x 1000 x 1200 - 200	1300 x 1000 x 1200 - 200



TOP LOADING SERIES HIGH PRESSURE SPRAY WASHING SYSTEM WITH ROTARY BASKET



WM SERIES



TECHNICAL SERVICE



HIGH PERFORMANCE



MINIMUM CONSUMPTION

The parts which will be washed are placed on a basket that is placed on a stainless rotary platform with sliding system are washed in a closed cabinet with high pressured hot and detergent water. The washing process is done through water nozzles which are timed and compressive according to part structure, dirtiness rate; they clean the waste, oil, and chip on dirty surfaces in various angles.

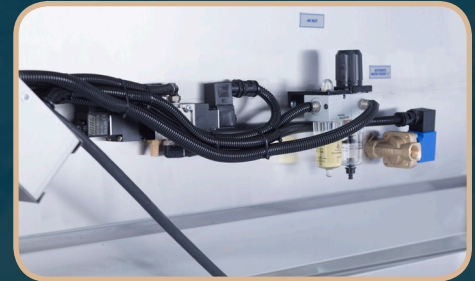
Machine has been designed for minimum consuming the water, detergent, electric, and time (work force) with cyclic and filtering water system.

MODEL	WM850	WM1000	WM1250
Basket Diameter (mm.)	750	900	1150
Loading Height (mm.)	350	450	600
Loading Capacity (kg.)	150	300	450
Tank Capacity (lt.)	60	80	200
Pump Pressure (bar)	2,5	2,5	3,0
Pump Quantity and Power	1 Piece x 3,0 Hp	1 Piece x 3,0 Hp	1 Piece x 3,0 Hp
Heater (kW)	7,5	7,5	15
Electricity (V/Phase/Hz)	220-380-415/3-1/50-60	220-380-415/3-1/50-60	220-380-415/3-1/50-60
Process Timer (min.)	0-90	0-90	0-90
Working Temperature	0-90°C	0-90°C	0-90°C
Loading Vehicle	not available	standard	standard
Rotary Basket	standard	standard	standard
Oil Skimmer	not available	standard	standard
AISI 430 Stainless Steel Body	standard	standard	standard
AISI 304 Stainless Steel Body	optional	optional	standard
AISI 316 Stainless Steel Body	optional	optional	optional
Packing Size and Weight (mm. - kg.)	1300 x 1000 x 1200 - 200	1300 x 1000 x 1200 - 200	1300 x 1000 x 1200 - 200

SPECIFICATION

- ▣ Stainless Steel Body
- ▣ Completely manufactured with stainless steel sheets and components.
- ▣ Cleaning process timing
- ▣ Developed for minimum water, detergent and electric consumption.
- ▣ Minimum water consumption by closed circuit water cycling system.
- ▣ Heated water (solution) dispensed through jet nozzles to the part.
- ▣ High user safety on gas pistons
- ▣ Gear driven rotary table

FRONT LOADING SERIES HIGH PRESSURE SPRAY WASHING SYSTEM WITH ROTARY BASKET



WM SERIES



TECHNICAL
SERVICE



USER
SAFETY



MINIMUM
CONSUMPTION

The parts which will be washed are placed on a basket that is placed on a stainless rotary platform with sliding system are washed in a closed cabinet with high pressured hot and detergent water. The washing process is done through water nozzles which are timed and compressive according to part structure, dirtiness rate; they clean the waste, oil, and chip on dirty surfaces in various angles.

Machine has been designed for minimum consuming the water, detergent, electric, and time (work force) with cyclic and filtering water system.

SPECIFICATION

- ▣ Stainless Steel Body
- ▣ Completely manufactured with stainless steel sheets and components.
- ▣ Cleaning process timing
- ▣ Developed for minimum water, detergent and electric consumption.
- ▣ Minimum water consumption by closed circuit water cycling system.
- ▣ Heated water (solution) dispensed through jet nozzles to the part
- ▣ Pneumatic front door movement.
- ▣ High user safety on pneumatic pistons
- ▣ Gear driven rotary table
- ▣ Automatic water feeding system

MODEL	WM1500	WM1750	WM2000
Basket Diameter (mm.)	1350	1600	1850
Loading Height (mm.)	700	800	900
Loading Capacity (kg.)	650	750	850
Tank Capacity (lt.)	300	300	400
Pump Pressure (bar)	6,0	9,0	9,0
Pump Quantity and Power	2 Piece x 3,0 Hp	3 Piece x 3,0 Hp	3 Piece x 3,0 Hp
Heater (kW)	15	15	22,5
Electricity (V/Phase/Hz)	220-380-415/3-1/50-60	220-380-415/3-1/50-60	220-380-415/3-1/50-60
Process Timer (min.)	0-90	0-90	0-90
Working Temperature	0-90°C	0-90°C	0-90°C
Loading Vehicle	standard	standard	standard
Rotary Basket	standard	standard	standard
Oil Skimmer	standard	standard	standard
Liquid Level Control System	standard	standard	standard
AISI 430 Stainless Steel Body	standard	standard	standard
AISI 304 Stainless Steel Body	optional	optional	optional
AISI 316 Stainless Steel Body	optional	optional	optional
Packing Size and Weight (mm. - kg.)	1300 x 1000 x 1200 – 200	1300 x 1000 x 1200 – 200	1300 x 1000 x 1200 – 200



MANUAL WASHING SERIES

MANUAL WASHING WITH SPECIAL CLEANING BRUSH



MW SERIES



TECHNICAL SERVICE



COMPACT DESIGN



MINIMUM CONSUMPTION

The Manual Washing Series is designed to clean small and complex parts in the fastest and most effective way. Thanks to the special brush of the Manual Washing Series, it effectively cleans even the smallest areas. Thanks to its special small design, the MW900 takes up very little space.

MODEL	MW900	MW900-STR
Working Area (mm.)	900 x 600	900 x 600
Loading Capacity (kg.)	50	150
Tank Capacity (lt.)	30	40
Electricity (V / Phase / Hz)	220-380-415/3-1/50-60	220-380-415/3-1/50-60
Heater	optional - 4,5 kW	standard - 4,5 kW
Washing Brush	standard	standard
Air Gun	standard	standard
Solvent Pump	optional	standard
AISI 430 Stainless Steel Body	standard	standard
AISI 304 Stainless Steel Body	optional	optional
AISI 304 Stainless Steel Body	optional	optional



HIGH PRESSURE WASHING SERIES HIGH PRESSURE WASHING CABINET SERIES MACHINES



HPWM SERIES

-  **DETAILED CLEANING**
-  **FULL CONTROL**
-  **AUTOMATIC DOOR**

HPWM Series High Pressure Washing Cabinet Series Machines are designed to wash small and complex parts with high pressure and heated water. Thanks to the foot switch, it provides the operator with a much easier and controlled washing experience.

The high-water flow and high pressure in the pump provide excellent cleaning. Hot water increases the cleaning effect and the insulated tank minimizes energy loss.

Good lighting in the washing cabin and the pneumatic cleaning blades in the window make it easy to see the part and increase operator control during washing.

The air gun inside the cabinet helps to dry after washing. There are 2 separate filters in the machine. One is at the tank entrance, the second at the tank exit.

Thanks to this filtering system, the life of the machine, water and detergent usage life is extended. Both filters can be washed and reused so that extra costs are prevented.

You will have full control of the machine thanks to the indicator and manometer that you can observe the water temperature.

MODEL	HPWM1100	HPWM800
Dimensions working area (mm.)	1100x700	800x550
Loading height of the part (mm.)	800	800
Loading capacity (kg.)	100	70
Tank capacity (lt.)	120	70
Pressure pump (up to 60 bar)	55,0	55,0
Pressure regulating valves	standard	standard
Manometer	standard	standard
Pump capacity	1 piece x 3,0 Hp	1 piece x 3,0 Hp
Pump flow (lt / min)	14	14
Heater (kW)	10	7,5
Electric (V / phase / Frequency)	220-380-415 / 3 / 50 Hz-60 Hz	220-380-415/3 / 50 Hz-60 Hz
Air supply (bar)	6-7	6-7
Temperature	0-50°C	0-50°C
Foot switch	standard	standard
High pressure water gun	standard	standard
Stainless steel filter basket	standard	standard
Air gun for drying	standard	standard
Interior Lighting	standard	standard
Air jet cleaning windows	standard	standard
Cleaning Wiper	optional	optional
Pneumatic Driven Front Door	standard	standard
Body Material - AISI430	standard	standard
Body Material - AISI304	optional	optional
Body Material - AISI316	optional	optional
Package size and weight (mm-kg.)	1200 x 850 x 2100 - 240	950x 650 x 2000-175



HIGH PRESSURE WASHING SERIES HIGH PRESSURE WASHING CABINET SERIES MACHINES



HPWM-AC SERIES

MODEL	HPWM1100-AC	HPWM800-AC
Dimensions working area (mm.)	1100x700	800x550
Loading height of the part (mm.)	800	800
Loading capacity (kg.)	100	70
Tank capacity (lt.)	120	70
Pressure pump (up to 60 bar)	55,0	55,0
Pressure regulating valves	standard	standard
Manometer	standard	standard
Pump capacity	1 piece x 3,0 Hp	1 piece x 3,0 Hp
Pump flow (lt / min)	14	14
Heater (kW)	10	7,5
Electric (V / phase / Frequency)	220-380-415 / 3 / 50 Hz-60 Hz	220-380-415/3 / 50 Hz-60 Hz
Air supply (bar)	6-7	6-7
Temperature	0-50°C	0-50°C
Foot switch	standard	standard
High pressure water gun	standard	standard
Stainless steel filter basket	standard	standard
Air gun for drying	standard	standard
Interior Lighting	standard	standard
Air jet cleaning windows	standard	standard
Cleaning Wiper	optional	optional
Articulated upper cabin	standard	standard
Body Material – AISI430	standard	standard
Body Material – AISI304	optional	optional
Body Material – AISI316	optional	optional
Package size and weight (mm.-kg.)	1200 x 850 x 2100 – 240	950x 650 x 2000-175



**DETAILED
CLEANING**



**FULL
CONTROL**



**ARTICULATED
CABIN**

HPWM-AC Series High Pressure Washing Series with Articulated Cabinet Machines are designed to wash small, heavy and complex parts with high pressure and heated water.

Thanks to the foot switch, it provides the operator with a much easier and controlled washing experience.

The high-water flow and high pressure in the pump provide excellent cleaning. Hot water increases the cleaning effect and the insulated tank minimizes energy loss.

Good lighting in the washing cabin and the pneumatic cleaning blades in the window make it easy to see the part and increase operator control during washing.

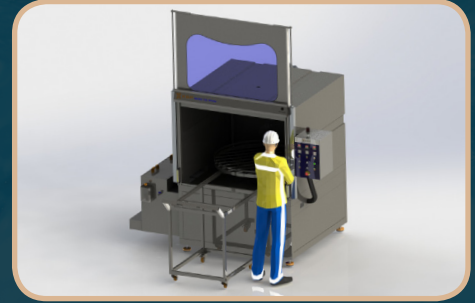
The air gun inside the cabinet helps to dry after washing.

There are 2 separate filters in the machine. One is at the tank entrance, the second at the tank exit.

Thanks to this filtering system, the life of the machine, water and detergent usage life is extended. Both filters can be washed and reused so that extra costs are prevented.

You will have full control of the machine thanks to the indicator and manometer that you can observe the water temperature.

PURGE XLARGE 1500-1750-2000 FULLY AUTOMATIC PROFESSIONAL CLEANING SYSTEMS



PURGE XLARGE



**DETAILED
CLEANING**



**ALL IN ONE
DESIGN**



**FULLY
AUTOMATIC**

The parts which will be washed are placed on a basket that is placed on a stainless rotary platform with sliding system are washed in a closed cabinet with high pressured hot and detergent water.

The washing process is done through water nozzles which are timed and compressive according to part structure, dirtiness rate; they clean the waste, oil, and chip on dirty surfaces in various angles.

Rinsing process follows washing process and completes the cleaning of the parts in the system. After cleaning processes drying process starts, which works with hot air and air jets.

SPECIFICATION

- ▣ Stainless Steel Body
- ▣ Completely Manufactured with Stainless Steel Sheets and Components.
- ▣ Stainless Steel Heaters
- ▣ Part Observation Glass on Front Door
- ▣ Stainless Steel Filtration System for Rinsing Operation
- ▣ Cleaning Process Timing
- ▣ Water Heating Control System
- ▣ Water Level Control, Automatic Water Feeding and Water Heater Protection Systems
- ▣ High User Safety Pneumatic Piston Driven Front Door Movement System
- ▣ Door Drop-Down Protection System
- ▣ Light Curtain Safety Barrier Protection System on Front Door
- ▣ Developed for Minimum Water, Detergent and Electric Consumption
- ▣ Minimum Water Consumption by Closed Circuit Water Cycling System
- ▣ Heated Water (solution) Dispensed Through Jet Nozzles to the Part
- ▣ Electrical Component usage According to CE Standards
- ▣ Electrical Leakage Protection and 24V Control Systems
- ▣ Emergency Stop Button
- ▣ Strengthen Gear Driven Rotary Table

USING AREAS

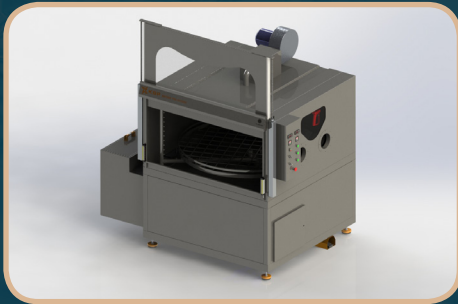
- ▣ To wash motor blocks and parts
- ▣ To wash any parts at bus, truck, automobile and work machines service stations
- ▣ At the workshops which manufacture machining parts and oiled part.
- ▣ At the firms which engine reconditioning and cylinder head repairing.





MULTI-PROCESS WASHING SERIES

WASHING RINSING - DRYING



MODEL	PURGE XL 1500	PURGE XL 1750	PURGE XL 2000
Basket Diameter (mm.)	1350	1600	1850
Loading Height (mm.)	700	800	900
Loading Capacity (kg.)	650	750	850
Washing System	standard	standard	standard
Washing Tank Capacity (lt.)	400	400	450
Rinsing System	standard	standard	standard
Rinsing Tank Capacity (lt.)	200	250	450
Pump Quantity and Power	3 Pieces x 3,0 Hp	3 Pieces x 3,0 Hp	4 Pieces x 3,0 Hp
Heater (kW)	7,5 kW x 3 Pieces	7,5 kW x 3 Pieces	7,5 kW x 4 Pieces
Electricity (V/Phase/Hz)	220-380-415 / 3-1 / 50-60	220-380-415 / 3-1 / 50-60	220-380-415 / 3-1 / 50-60
Process Timer (min.)	0-99	0-99	0-99
Working Temperature	0-90°C	0-90°C	0-90°C
Drying System	optional	optional	optional
Loading Vehicle	standard	standard	standard
Rotary Basket	standard	standard	standard
Oil Skimmer (Washing Tank)	standard	standard	standard
Filtration System (Rinsing Tank)	optional	optional	optional
Touch-Screen and PLC Control System	optional	optional	optional
Safety Light Curtain System	optional	optional	optional
Liquid Level Control and Automatic Feeding System	standard	standard	standard
Steam Extraction System	standard	standard	standard
Door Drop-Down Safety System	standard	standard	standard
AISI 430 Stainless Steel Body	standard	standard	standard
AISI 304 Stainless Steel Body	optional	optional	optional
AISI 316 Stainless Steel Body	optional	optional	optional
Packing Size and Weight (mm. - kg.)	1600 x 3000 x 2200 - 750 (app.)	1850 x 3250 x 2300 - 850 (app.)	2100 x 3500 x 2450 - 950 (app.)

DPF1800
DIESEL PARTICULATE
FILTER WASHING SYSTEM



DPF1800
SERIES



BEST
PERFORMANCE



TOUCH
SCREEN



FULLY
AUTOMATIC





DPF/FAP/SCR CLEANER FULLY AUTOMATIC WASHING SYSTEM



MODEL	DPF1800	DPF1800-F	DPF1800-PRO	DPF1800-Premium
Washing Capacity (mm.)	1800 x 600 x 1000	1800 x 600 x 1000	1800 x 600 x 1000	1800 x 600 x 1000
Loading Capacity (kg.)	250	250	250	250
Electricity (V/Phase/Hz)	380-400 / 3 + N + G / 50	380-400 / 3 + N + G / 50	380-400 / 3 + N + G / 50	380-400 / 3 + N + G / 50
Interior Lightning (Lux / Class)	L70 / IP67	L70 / IP67	L70 / IP67	L70 / IP67
Power Consumption (kW)	20	38	38	38
Minimum Air Need (lt / bar)	100 / 6	100 / 6	100 / 6	100 / 6
Safety Light Curtain	optional	not available	optional	standard
Safety Relays	optional	optional	optional	standard
Drying System	optional	standard	standard	standard
Touch-Screen Size	7"	10"	10"	10"
External Dimensions (mm)	2320 x 1000 x 2200	2320 x 1000 x 2200	2320 x 1000 x 2200	2320 x 1000 x 2200

Standard Equipment

Testing System, Connecting Apparatus for Commercial Cars and Trucks, PLC Control, Printer, Touch-Screen, Filter Fixing Mechanisms, Water heating, Emergency Stop, Pneumatic Door, Stainless Steel Filters

With the help of more than 20 Years of experience on Engineering KSP Machine has designed the best automatic machine for Diesel Particulate Filter Cleaning Machine. DPF1800 is fully designed and programmed by KSP Engineers after a serious Research and Development Process.

DPF1800 is designed to clean both passenger and commercial vehicles DPFs. Separated Washing and Drying Systems grants you to Wash and Dry different DPFs at the same time, by doing so you will save time and money.

DPF1800 grants more than %99 cleaning effort by regulations on the program and it will let you proof this with the help of printed testing report before and after the cleaning process. Testing process is done by back pressure testing method just like in your cars.

All the functions and safety precautions are controlled by PLC Controllers and Safety Relays; with the help of pre-defined washing programs and Touch-Screen any one can become an Expert for DPF cleaning.

DPF1800 is designed according to CE Norms and Safety Regulations; and limited for both safety of the user and the DPFs. Controls and even the lightning of the washing chamber is done by 24 V DC.

Filtering system on the Washing System always grants you to have clean water and let you make more efficient cleaning for the DPFs. These changeable and washable filters protect you from any future loss or additional costs that can appear for both machine and the work you have done.

UWM600-800-900-1300 ULTRASONIC PARTS WASHING MACHINES



UWM SERIES



DETAILED
CLEANING



TOUCH
SCREEN



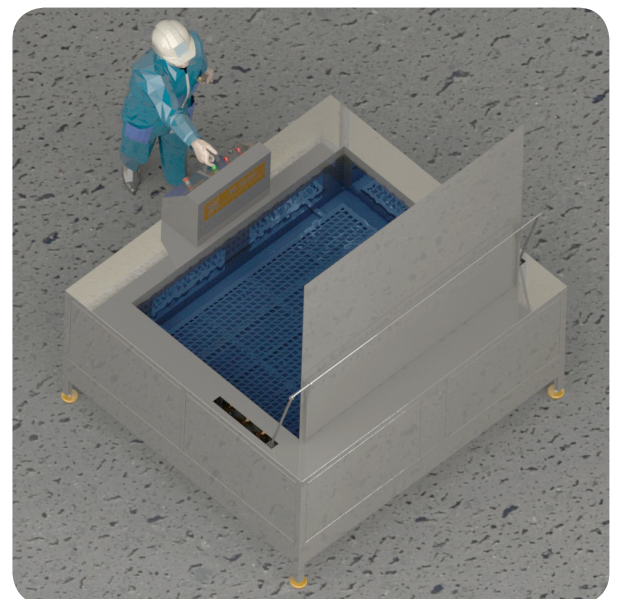
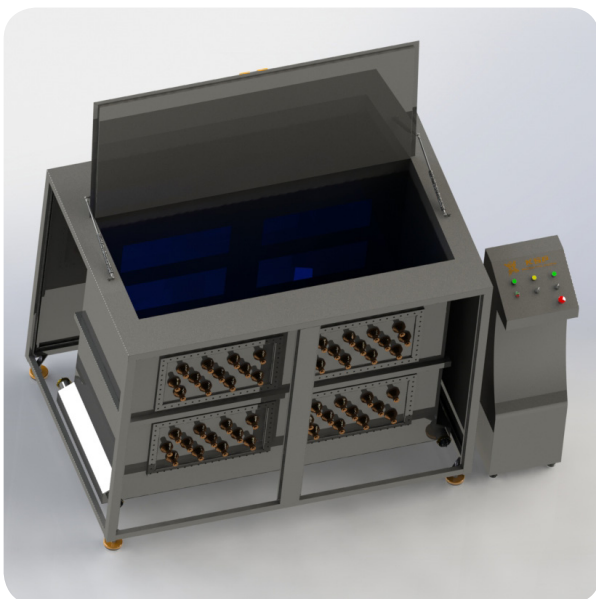
FULLY
AUTOMATIC

Our product line includes every type of cleaning system, bench top ultrasonic washer, to fully-automated multi-stage systems that produce zero-residue cleaning results for high-technology parts washing applications, and everything in-between.

As our all other products, UWM Series are built with high quality mostly European made components.

Customized for Your Application:

While competitive ultrasonic cleaners have designed standard cleaning systems which may not be perfectly suited to your application. In this case KSP Team can design any machine according to your systems' needs with the help of Mechanical, Electronic and Software Engineers in the development team.

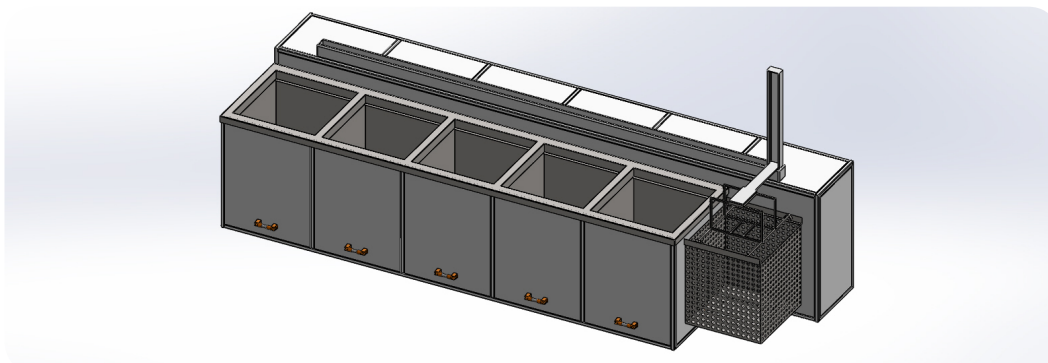




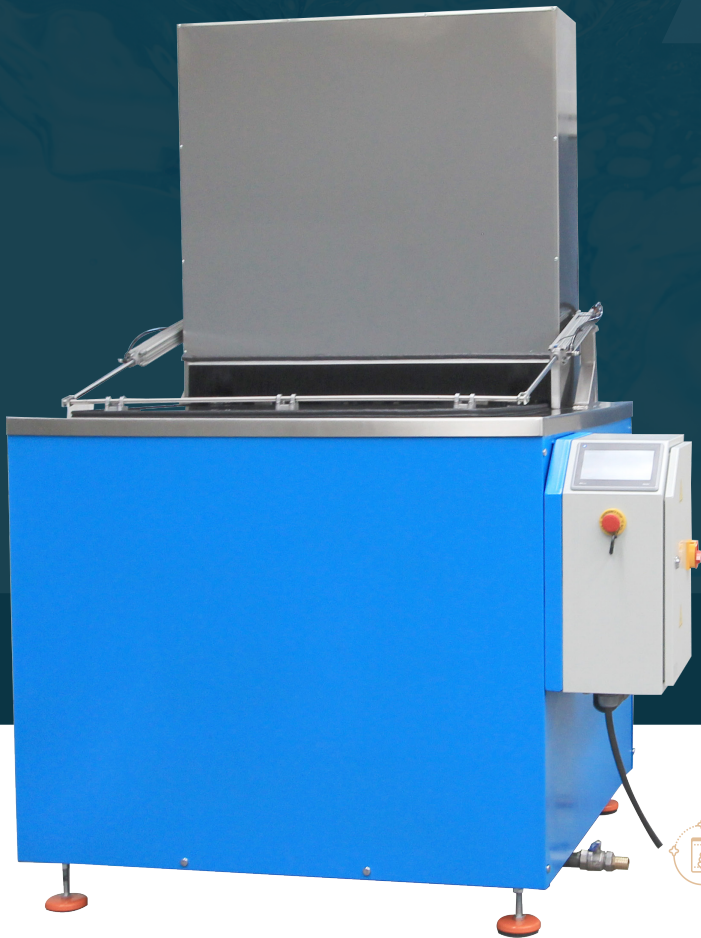
UWM SERIES FULLY AUTOMATIC WASHING SYSTEM



MODEL	UWM600	UWM800	UWM900	UWM1300	UWM1300-S
Internal Tank (mm.)	600×450×450	800×500×500	900×650×650	1300×800×750	1300×800×750
Internal Tank Capacity (lt.)	100	160	350	720	720
Inside Tank Material Stainless Steel	AISI304	AISI304	AISI304	AISI304	AISI304
Platform (mm.)	550 x 300	750 x 400	850 x 500	1250 x 700	1250 x 700
Platform Elevator	optional	optional	standard	standard	standard
Automatic Cover (Lifting And Closing)	optional	optional	standard	standard	standard
Loading weight (kg.)	75	150	250	400	400
Ultrasound Power (Weff/Wpeak)	750 / 1500	1500 / 3000	3000 / 6000	4500 / 9000	6000 / 12000
Frequency (kHz)	27	27	27	27	27
Heating resistance (kW)	5	7,5	10	15	15
PLC Control	optional	optional	standard	standard	standard
Touch-Screen	optional	optional	standard	standard	standard
Electric (V/phase)	220-380/3	220-380/3	220-380/3	220-380/3	220-380/3
Timer	0-30 minutes	0-30 minutes	0-30 minutes	0-30 minutes	0-30 minutes
Thermostat	0-80°C	0-80°C	0-80°C	0-80°C	0-80°C
Oil Separator	not available	not available	standard	standard	standard
Liquid Level Control System	optional	optional	optional	standard	standard



PAW400 - 800 - 1000
**PLATFORM AGITATION
 WASHING SYSTEM**



**PAW
 SERIES**



**DETAILED
 CLEANING**



**TOUCH
 SCREEN**



**FULLY
 AUTOMATIC**

PAW Series is the latest design of the pneumatic driven platform agitation parts washer. It is ideal for use in many industries including transportation, metalworking, printing, and reconditioning.

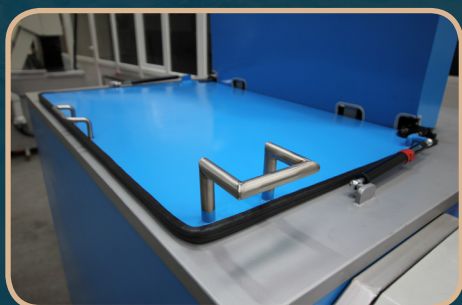
The movement of parts within the liquid reduces dramatically the washing time and improves the cleaning efficiency, without affecting negatively the duration of the cleaning media.

PAW Series which are designed for the removal of oils, chips, and particulate from a wide range of components by using water-based detergents and environmentally safe solvent chemistries.

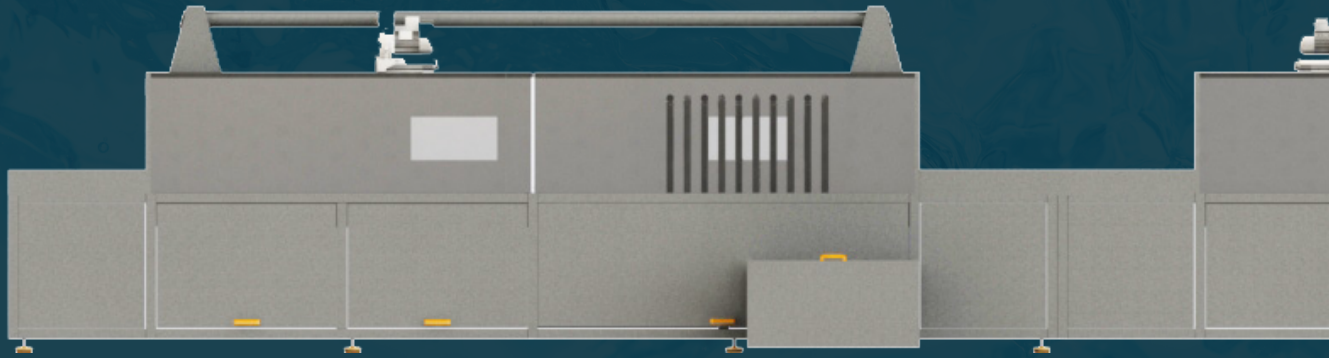
All controls have been doing by PLC control unit.



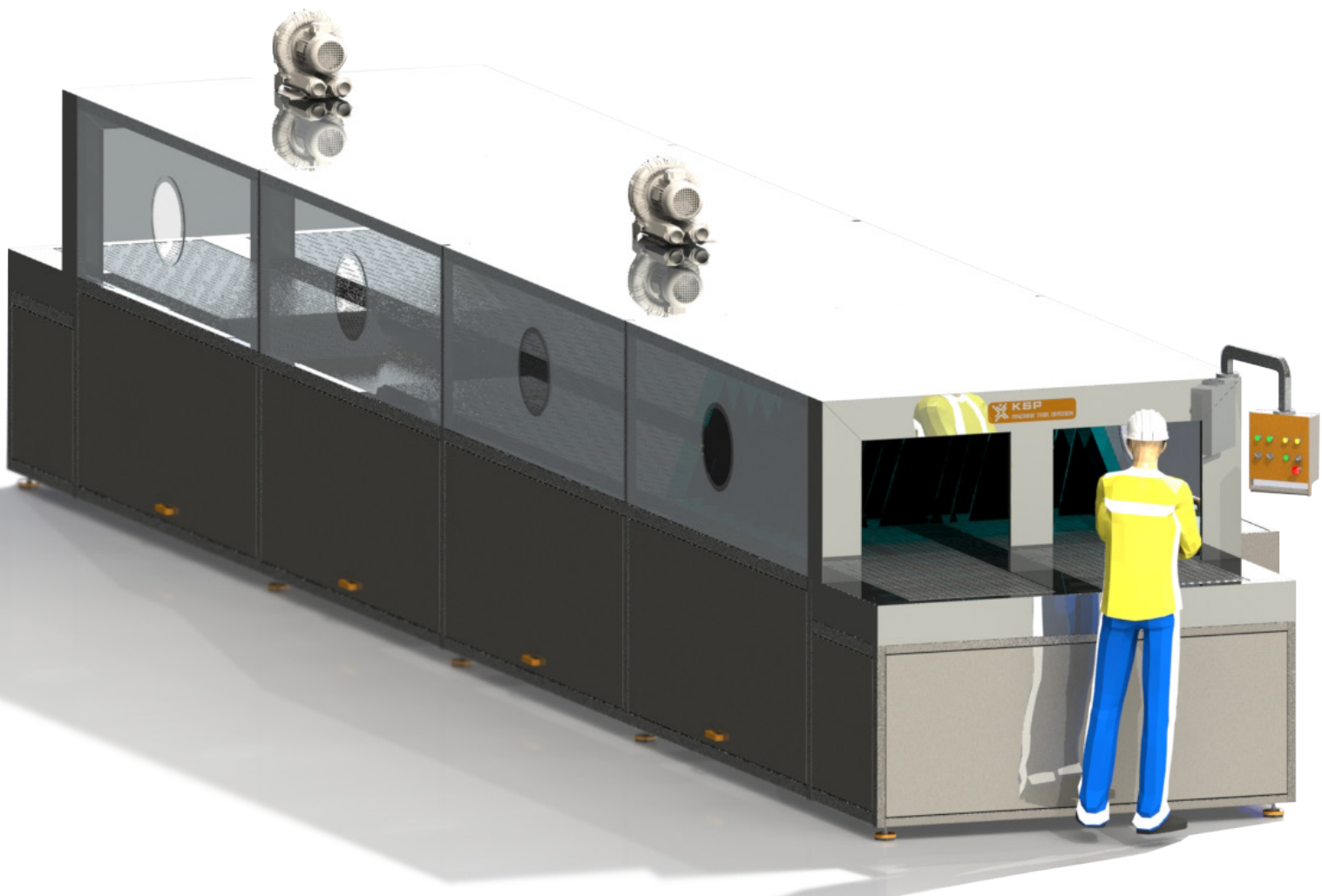
PNEUMATIC DRIVEN PLATFORM PLC CONTROLLED PLATFORM SYSTEM

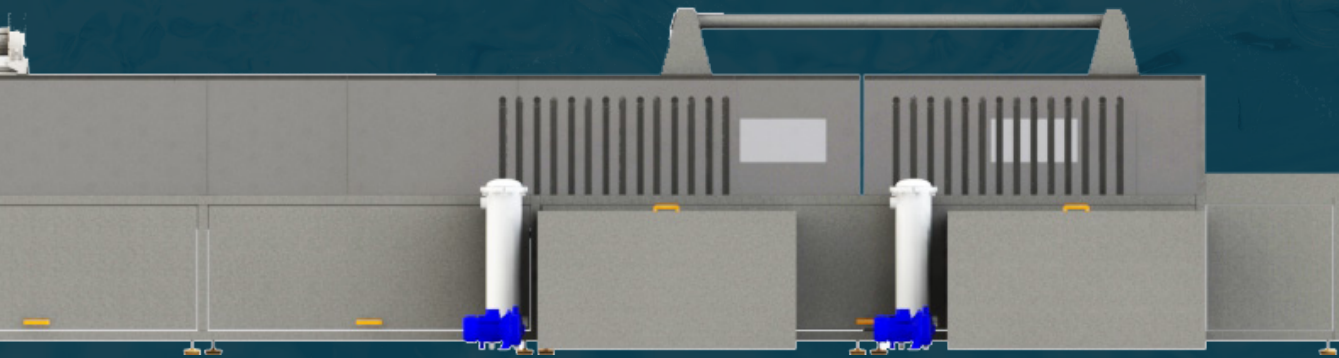


MODEL	PAW400	PAW800	PAW1000
Loading Capacity (kg.)	400	800	1000
Inside Tank Material Stainless Steel	AISI316	AISI316	AISI316
Platform (mm.)	900 x 700	1100x700	1300x900
Solution Volume (lt.)	800	1200	1900
Solution Depth (mm.)	800	900	1100
Electricity (V / Hz / Phase)	380-415-440 / 50-60 / 3	380-415-440 / 50-60 / 3	380-415-440 / 50-60 / 3
Filtering System	2 Hp Circulation Pump, 500-micron Filter	2 Hp Circulation Pump, 500-micron Filter	2 Hp Circulation Pump, 500-micron Filter
Platform Movement System	By Pneumatic Pistons	By Pneumatic Pistons	By Pneumatic Pistons
Platform Movement (Max. - mm.)	400	500	700
Heating resistance (kW)	36	48	48
PLC Control and HMI	standard	standard	standard
Cycle	Adjustable Through HMI	Adjustable Through HMI	Adjustable Through HMI
Thermostat	0-90 °C	0-90 °C	0-90 °C
Control Voltage	24 Volt DC	24 Volt DC	24 Volt DC
Required Air Pressure (bar)	8-10	8-10	8-10
Agitation	Fast or Slow Agitation Speed	Fast or Slow Agitation Speed	Fast or Slow Agitation Speed
Cover Lift System	optional	standard	standard



SPECIAL DESIGN





KSP Machine is a reliable business partner with over 20 years of experience to meet all your special processes, special parts and customary washing requirements.

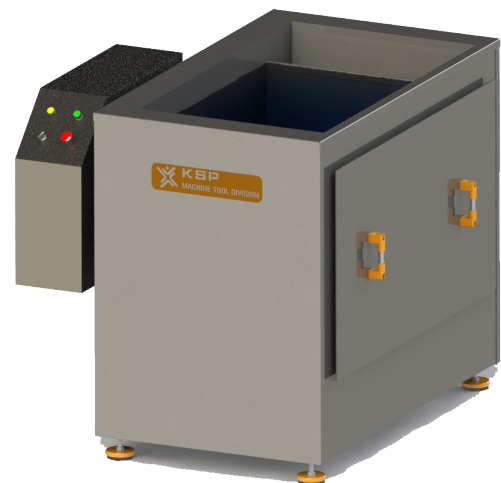
Thanks to the experience we have gained as a result of our works with many big companies in Europe, America, Australia and Asia. KSP has the experience and ability to meet all your needs with its expert design team in the field of washing machines and systems. We are at your service to design the best, economic and most effective systems to meet customer needs.

Some Special Design Examples;

- ▣ Multi-station process requirements
- ▣ Collectors designed according to the geometry of the parts to be washed
- ▣ Special nozzle groups sprayed with water at different angles
- ▣ Working in line production speed
- ▣ Special design for your production facility
- ▣ A wide range of process applications thanks to its modular design
- ▣ Special engineering services

Process Order;

- ▣ Washing
- ▣ Rinsing
- ▣ Drying
- ▣ Lubrication
- ▣ Passivation
- ▣ Phosphating
- ▣ Packaging



CPT 1200-1350-1500 CYLINDER HEAD - BLOCK PRESSURE CRACK TESTER



**CPT
SERIES**



**%100 CORRECT
TESTING**



**360°
TURNING**



**STRONG
STRUCTURE**

There are several ways to test cracks on cylinder head blocks. But the best way is testing it by air pressure in the heated water.

CPT grants the best performance by using thermal expansion with the help of hot water.

Thermal extension makes cracks bigger so that even the smallest crack can be determined by the observing air flow inside of the water.

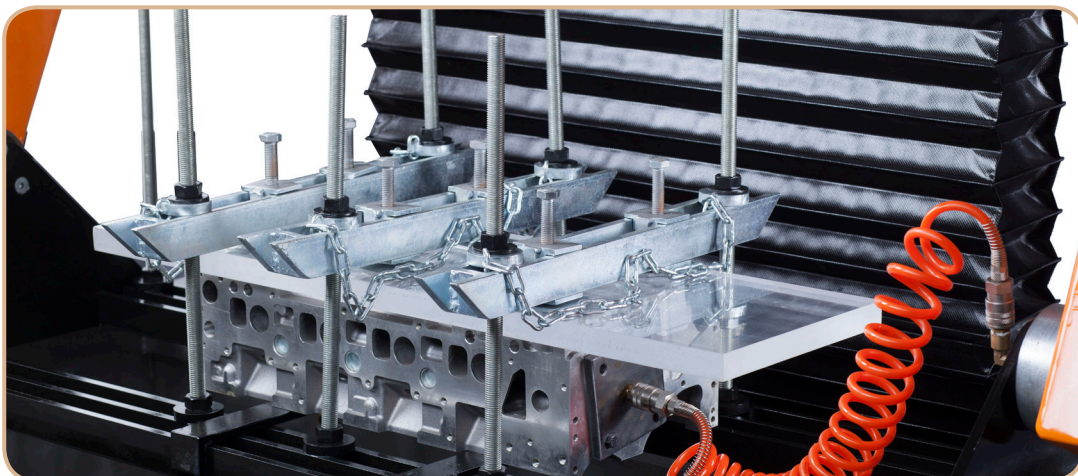




CYLINDER HEAD CRACK TESTER HYDRAULIC DRIVEN PLATFORM SYSTEM



MODEL	CPT1200	CPT1350	CPT1500
Machine Dimensions (mm.)	2000 x 1050 x 1700	2150 x 1100 x 1800	2300 x 1100 x 1800
Max. Cylinder Head Dimensions (mm.)	1200 x 400 x 300	1350 x 440 x 400	1500 x 440 x 400
Max. Cylinder Head Weight (kg.)	300	350	550
Pressure (bar)	0-10	0-10	0-10
Thermostat	0-90 °C	0-90 °C	0-90 °C
Tank Capacity (lt.)	500	700	850
Electricity (V / Hz / Phase)	220-380-415-440 / 50-60 / 3	220-380-415-440 / 50-60 / 3	220-380-415-440 / 50-60 / 3
Heaters (kW)	2 x 10	2 x 10	2 x 10
Rotational Motor Rotation Speed	815 rpm	815 rpm	815 rpm
Rotational Motor Power (kW)	0,18	0,37	0,37
Up and Down Travel Time (sec.)	10	10	10
Weight (Empty - kg.)	450	680	800
Packing Dimensions (mm.)	2100 x 1200 x 1850	2250 x 1250 x 1950	2400 x 1250 x 1950





VDG SERIES

The precision and reliability of the production together with an experience of almost 20 years in the machine sector, allow us to be successful and to consolidate its presence both in local and foreign market.

The research and constant innovation; the use latest technologies; development of the current products and manufacturing of new products; enable us to present of a wide range of machines for complying our customers' demands.

We are presenting VDG Series to you in order to cover your small surface grinding needs of a different industries, such as valve clearance disc grinding, metallurgical sample preparation, punch tool re-sharpening and shim grinding.

VDG Series has a powerful magnetic chuck for holding smallest parts tightly. It has a 150 mm grinding wheel on grinding head can turn 360°.

Our machine has 0,01 mm. highest grinding precision and digital indicator showing grinding feed.

- ▣ Rigid and durable heavy body structure
- ▣ Very smooth grinding action through radial wheel head path
- ▣ 0,25 kW Grinding wheel motor
- ▣ 0,18 kW Cooling Pump
- ▣ 0,01 mm. highest grinding precision
- ▣ 100 Watt Magnetic chuck on 150 x 100 mm. size
- ▣ Ø 150 mm (5,9") big grinding wheel offers superior life
- ▣ 240 V, other voltages are available upon request





KSP500 CYLINDER HEAD VALVE SPRING ASSEMBLY BENCH

You can move cylinder head on the bench on 3 ways and you can adjust cylinder head angle easily. Remove and install valve springs on cylinder heads with recessed springs. Two different size spring adaptors is standard outfits.

KSP500 is re-engineered by the KSP Engineers to prove easier removing and installing valve springs on cylinder heads. You can move the cylinder head on 3 axis, and you can adjust machine head in 3 axis also. This moving capability grants excellent control on the machine and provides a better and easier assembling-disassembling experience.

KSP500 has two different size of spring adaptors as standard outfit.



VT2012 Vacuum Tester

KSP VT 2012 Electric vacuum tester is manufactured for all kind repair workshops for sensitive testing of valve seats and guides during the cylinder head reconditioning before or after the repairing operation. You can also use our vacuum tester for any function tests of other vacuum controlled components.

VT 2012 equipped with special designed strongest oil-less vacuum pump which has equipped cooler fan.

- ▣ The adapters can connect and disconnect easily by using quick couplings.
- ▣ It is for sealing tests of valve seats and guides before or after rebuilding of a cylinder head...
- ▣ Easy carry, easy test...
- ▣ Oil-less, not need maintenance....

MODEL	VT2012
Max. intermittent duty	2,50 bar
Max. vacuum	%85
Motor	62 W 67 W
Electric motor	230 V, 50 Hz 115V/60 Hz available
Overall dimensions	L: 260 mm, W: 180 mm, H: 120 mm
Weight	3,750 kg
Shipping dimensions	L: 300 mm, W: 300 mm, H: 200 mm
Shipping weight	10,00 kg

Standard Outfit

Main supply cable, flexible cable (Length 2m) with quick couplings, 5 adapters on different type and size, other size and more is available





**WORLD' S LEADING COMPANY IN
INDUSTRIAL WASHING...**





FEVZİ ÇAKMAK MAH. AHMET PETEKÇİ CAD.
KOBİSAN SANAYİ SİTESİ NO: 17/N
KARATAY - KONYA - TÜRKİYE

• KSP reserves their right to make changes without any prior knowledge of the design, dimensions or technical specifications.

• Images in this brochure may exhibit changes with our machines.

• All Rights Reserved. KSP Machine Tool CO.

+90 332 351 31 11 (pbx) +90 332 351 66 36

kspmachine.com ksp@kspmachine.com